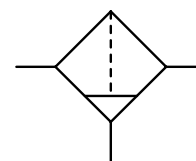


Description		Micro in-line filter F400
Filter element		Micro in-line filters are widely used in medical and process technology for cleaning compressed air for use in instruments and pneumatic logic systems. The micro in-line filter removes particles, oil and mist from compressed air. Also suitable for vacuum.
Filtration efficiency		The borosilicate micro-filter is manufactured in a special vacuum process which reduces the adhesive properties of the borosilicate fibres down to a minimum in order to achieve outstanding filtering capability. When saturated with oil, the filter turns red to indicate that replacement is required.
Connection		99.999% based on 0.03 µm particle size Operating pressure max. 9 bar Fitted with nipples able to take up hoses of 4.3 mm (11/16") or 6.3 mm (¼") internal diameter. Flow direction from INside to OUTside to be noted.
Description		Bronze in-line filter 137
Filter element		Bronze in-line filter for compressed air with coarse impurities.
Operating pressure		90 µm, 20 µm or optionally 5 µm, made of sintered bronze
Drainage		max. 21 bar with or without manual drain

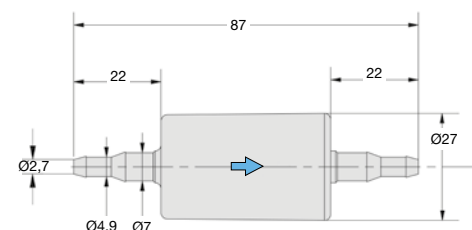


**0.3 µm coalescing
5/20/90 µm**

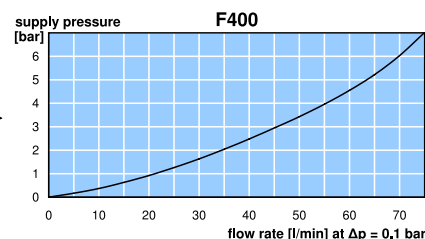
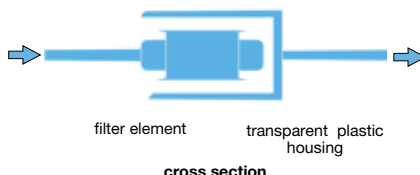
Dimensions			Description	Flow rate		P ₁ max.	Filter element	Connection thread	Order number
A	B	C		m³/h*1	l/min*1				
mm	mm	mm				bar	µm	nipple/G	

Micro in-line filter F400

87	43	Ø 27	borosilicate-micro filter	4.2	70	9	0.3	Ø 4 and Ø 6	F400
----	----	------	---------------------------	-----	----	---	-----	-------------	-------------



F400



F400

Bronze in-line filter

operating pressure max. 21 bar

137

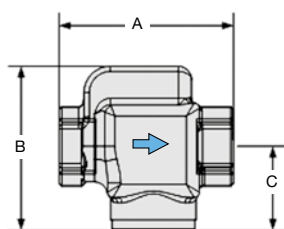
67	63	32	without manual drain	39	650	21	90	G¼	137-02
				42	700			G¾	137-03
				44	740			G½	137-04
				39	650	21	20	G¼	137-02H
				42	700			G¾	137-03H
				44	740			G½	137-04H
			with manual drain	19	320	21	5	G¼	137-02V
				21	350			G¾	137-03V
				22	370			G½	137-04V
				39	650	21	90	G¼	137-02A
				42	700			G¾	137-03A
				44	740			G½	137-04A
67	79	48	with manual drain	39	650	21	20	G¼	137-02AH
				42	700			G¾	137-03AH
				44	740			G½	137-04AH
				19	320	21	5	G¼	137-02AV
				21	350			G¾	137-03AV
				22	370			G½	137-04AV



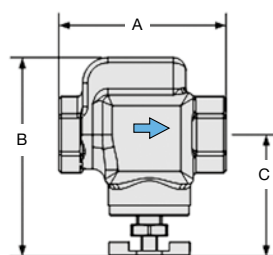
137-04



137-04A



137-...



137-...A.

*1 at 7 bar operating pressure and 0.1 bar pressure drop

